

**KLF4 Antibody (N-term C74)**  
**Purified Rabbit Polyclonal Antibody (Pab)**  
**Catalog # AP2725a****Specification**

---

**KLF4 Antibody (N-term C74) - Product Information**

|                   |                           |
|-------------------|---------------------------|
| Application       | WB, IHC-P, IF,E           |
| Primary Accession | <a href="#">O43474</a>    |
| Other Accession   | <a href="#">NP_004226</a> |
| Reactivity        | Human                     |
| Host              | Rabbit                    |
| Clonality         | Polyclonal                |
| Isotype           | Rabbit IgG                |
| Antigen Region    | 69-101                    |

**KLF4 Antibody (N-term C74) - Additional Information****Gene ID** 9314**Other Names**

Krueppel-like factor 4, Epithelial zinc finger protein EZF, Gut-enriched krueppel-like factor, KLF4, EZF, GKLF

**Target/Specificity**

This KLF4 antibody is generated from rabbits immunized with a KLH conjugated synthetic peptide between 69-101 amino acids of human KLF4.

**Dilution**

WB~~1:2000

IHC-P~~1:10~50

IF~~1:10~50

E~~Use at an assay dependent concentration.

**Format**

Purified polyclonal antibody supplied in PBS with 0.09% (W/V) sodium azide. This antibody is purified through a protein A column, followed by peptide affinity purification.

**Storage**

Maintain refrigerated at 2-8°C for up to 2 weeks. For long term storage store at -20°C in small aliquots to prevent freeze-thaw cycles.

**Precautions**

KLF4 Antibody (N-term C74) is for research use only and not for use in diagnostic or therapeutic procedures.

**KLF4 Antibody (N-term C74) - Protein Information****Name** KLF4 ([HGNC:6348](#))

**Synonyms** EZF, GKLf

**Function** Transcription factor; can act both as activator and as repressor. Binds the 5'-CACCC-3' core sequence. Binds to the promoter region of its own gene and can activate its own transcription. Regulates the expression of key transcription factors during embryonic development. Plays an important role in maintaining embryonic stem cells, and in preventing their differentiation. Required for establishing the barrier function of the skin and for postnatal maturation and maintenance of the ocular surface. Involved in the differentiation of epithelial cells and may also function in skeletal and kidney development. Contributes to the down-regulation of p53/TP53 transcription.

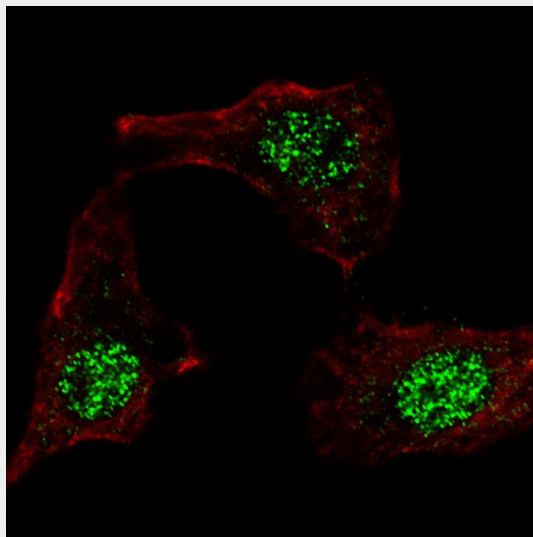
**Cellular Location**

Nucleus {ECO:0000250|UniProtKB:Q60793}. Cytoplasm {ECO:0000250|UniProtKB:Q60793}

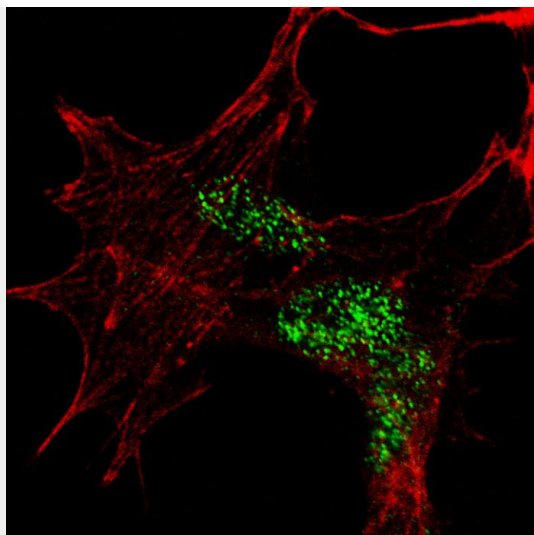
**KLF4 Antibody (N-term C74) - Protocols**

Provided below are standard protocols that you may find useful for product applications.

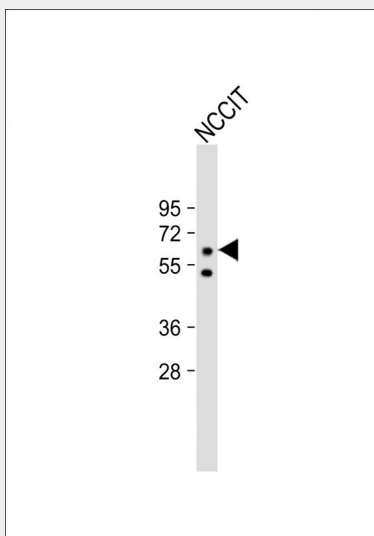
- [Western Blot](#)
- [Blocking Peptides](#)
- [Dot Blot](#)
- [Immunohistochemistry](#)
- [Immunofluorescence](#)
- [Immunoprecipitation](#)
- [Flow Cytometry](#)
- [Cell Culture](#)

**KLF4 Antibody (N-term C74) - Images**

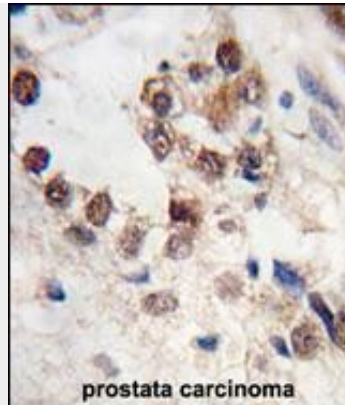
Fluorescent confocal image of HeLa cells stained with AP2725a KLF4 (N-term C74) antibody. HeLa cells were fixed with 4% PFA (20 min), permeabilized with Triton X-100 (0.2%, 30 min), then incubated with AP2725a KLF4 (N-term C74) primary antibody (1:100, 2 h at room temperature). For secondary antibody, Alexa Fluor® 488 conjugated donkey anti-rabbit antibody (green) was used (1:1000, 1h). Cytoplasmic actin was counterstained with Alexa Fluor® 555 (red) conjugated Phalloidin (5.25  $\mu$ M, 25 min). KLF4 immunoreactivity is localized to the nuclei in HeLa cells.



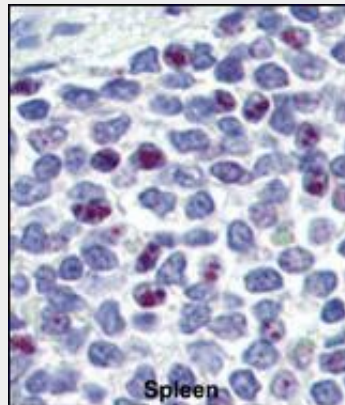
Fluorescent confocal image of SY5Y cells stained with AP2725a KLF4 (N-term C74) antibody. SY5Y cells were fixed with 4% PFA (20 min), permeabilized with Triton X-100 (0.2%, 30 min), then incubated with AP2725a KLF4 (N-term C74) primary antibody (1:100, 2 h at room temperature). For secondary antibody, Alexa Fluor® 488 conjugated donkey anti-rabbit antibody (green) was used (1:1000, 1h). Cytoplasmic actin was counterstained with Alexa Fluor® 555 (red) conjugated Phalloidin (5.25  $\mu$ M, 25 min). KLF4 immunoreactivity is localized to the nuclei in SY5Y cells.



Anti-KLF4 Antibody (N-term C74) at 1:2000 dilution + NCCIT whole cell lysate Lysates/proteins at 20  $\mu$ g per lane. Secondary Goat Anti-Rabbit IgG, (H+L), Peroxidase conjugated at 1/10000 dilution. Predicted band size : 55 kDa Blocking/Dilution buffer: 5% NFDM/TBST.



Formalin-fixed and paraffin-embedded human prostate carcinoma tissue reacted with KLF4 antibody (N-term C74) (Cat.#AP2725a), which was peroxidase-conjugated to the secondary antibody, followed by DAB staining. This data demonstrates the use of this antibody for immunohistochemistry; clinical relevance has not been evaluated.



Formalin-fixed and paraffin-embedded human Spleen tissue reacted with KLF4 antibody (N-term C74) (Cat.#AP2725a), which was peroxidase-conjugated to the secondary antibody, followed by AEC staining. This data demonstrates the use of this antibody for immunohistochemistry; clinical relevance has not been evaluated.

#### **KLF4 Antibody (N-term C74) - Background**

Transcription factor; can act both as activator and as repressor. Binds the 5'-CACCC-3' core sequence. Binds to the promoter region of its own gene and can activate its own transcription. Regulates the expression of key transcription factors during embryonic development. Plays an important role in maintaining embryonic stem cells, and in preventing their differentiation. Required for establishing the barrier function of the skin and for postnatal maturation and maintenance of the ocular surface. Involved in the differentiation of epithelial cells and may also function in skeletal and kidney development. Contributes to the down-regulation of p53/TP53 transcription.

#### **KLF4 Antibody (N-term C74) - References**

- Alder, J.K., J. Immunol. 180 (8), 5645-5652 (2008)
- Natesampillai, S., Am. J. Physiol. Endocrinol. Metab. 294 (2), E385-E391 (2008)
- Evans, P.M., J. Biol. Chem. 282 (47), 33994-34002 (2007)
- Behr, R., Mol. Hum. Reprod. 13 (11), 815-820 (2007)

#### **KLF4 Antibody (N-term C74) - Citations**

- [Early progenitor cell marker expression distinguishes type II from type I focal cortical dysplasias.](#)

